
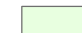

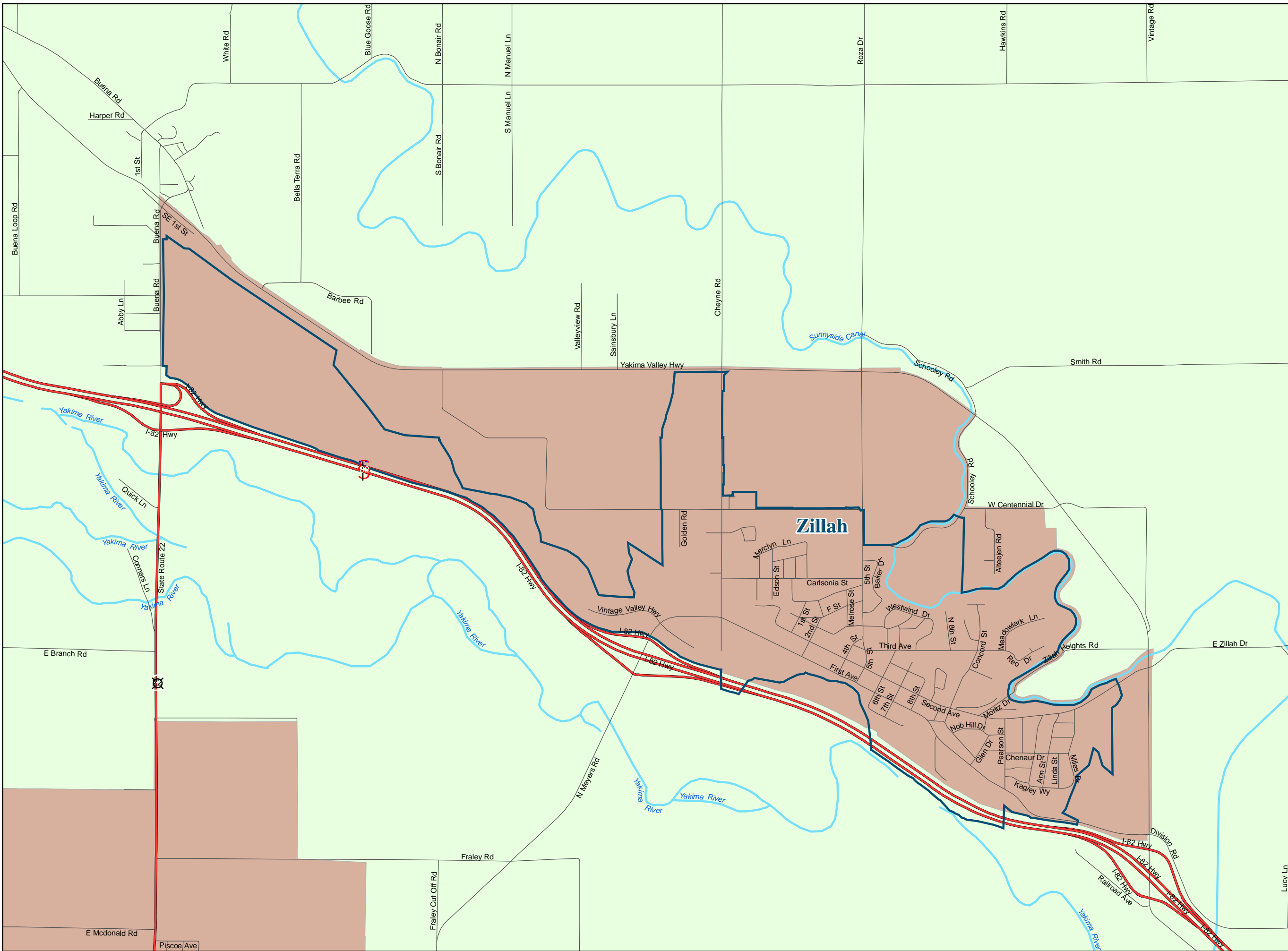


City of Zillah
Outdoor Burning
Prohibited Areas

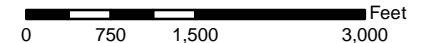
-  Outdoor Burning Prohibited
-  Burn Area
- City Limits**
-  Zillah



6 S. 2nd Street, Rm. 1016
Yakima, WA 98901
(509) 834-2050



1 inch equals 1,700 feet



Copyright (C) 2008 Yakima County
This map was derived from several databases. The
County cannot accept responsibility for any errors.
Therefore, there are no warranties for this product.
March 27, 2008